

**14-3-3 sigma Antibody**  
**Rabbit mAb**  
**Catalog # AP90856****Specification**

---

**14-3-3 sigma Antibody - Product Information**

Application	WB, IHC
Primary Accession	<a href="#">P31947</a>
Reactivity	Rat
Clonality	Monoclonal
<b>Other Names</b>	
14 3 3 protein; Epithelial cell marker protein 1; HME 1; Mkern3; Mm1; SFN protein; Stratifin; YWHAS;	
Isotype	Rabbit IgG
Host	Rabbit
Calculated MW	27774 Da

**14-3-3 sigma Antibody - Additional Information**

Dilution	WB~~1:1000 IHC~~1:100~500
Purification	Affinity-chromatography
Immunogen	A synthesized peptide derived from human 14-3-3 sigma
Description	Adapter protein implicated in the regulation of a large spectrum of both general and specialized signaling pathways. Binds to a large number of partners, usually by recognition of a phosphoserine or phosphothreonine motif. Binding generally results in the modulation of the activity of the binding partner. When bound to KRT17, regulates protein synthesis and epithelial cell growth by stimulating Akt/mTOR pathway.
Storage Condition and Buffer	Rabbit IgG in phosphate buffered saline , pH 7.4, 150mM NaCl, 0.02% sodium azide and 50% glycerol. Store at +4°C short term. Store at -20°C long term. Avoid freeze / thaw cycle.

**14-3-3 sigma Antibody - Protein Information****Name** SFN**Synonyms** HME1 {ECO:0000303|PubMed:1390337}**Function**

Adapter protein implicated in the regulation of a large spectrum of both general and specialized signaling pathways (PubMed:<a href="http://www.uniprot.org/citations/15731107" target="\_blank">15731107</a>, PubMed:<a href="http://www.uniprot.org/citations/22634725" target="\_blank">22634725</a>, PubMed:<a href="http://www.uniprot.org/citations/28202711" target="\_blank">28202711</a>, PubMed:<a href="http://www.uniprot.org/citations/37797010" target="\_blank">37797010</a>). Binds to a large number of partners, usually by recognition of a phosphoserine or phosphothreonine motif (PubMed:<a href="http://www.uniprot.org/citations/15731107" target="\_blank">15731107</a>, PubMed:<a href="http://www.uniprot.org/citations/22634725" target="\_blank">22634725</a>, PubMed:<a href="http://www.uniprot.org/citations/28202711" target="\_blank">28202711</a>, PubMed:<a href="http://www.uniprot.org/citations/37797010" target="\_blank">37797010</a>). Binding generally results in the modulation of the activity of the binding partner (PubMed:<a href="http://www.uniprot.org/citations/15731107" target="\_blank">15731107</a>, PubMed:<a href="http://www.uniprot.org/citations/22634725" target="\_blank">22634725</a>, PubMed:<a href="http://www.uniprot.org/citations/28202711" target="\_blank">28202711</a>, PubMed:<a href="http://www.uniprot.org/citations/37797010" target="\_blank">37797010</a>). Promotes cytosolic retention of GBP1 GTPase by binding to phosphorylated GBP1, thereby inhibiting the innate immune response (PubMed:<a href="http://www.uniprot.org/citations/37797010" target="\_blank">37797010</a>). Also acts as a TP53/p53-regulated inhibitor of G2/M progression (PubMed:<a href="http://www.uniprot.org/citations/9659898" target="\_blank">9659898</a>). When bound to KRT17, regulates protein synthesis and epithelial cell growth by stimulating Akt/mTOR pathway (By similarity). Acts to maintain desmosome cell junction adhesion in epithelial cells via interacting with and sequestering PKP3 to the cytoplasm, thereby restricting its translocation to existing desmosome structures and therefore maintaining desmosome protein homeostasis (PubMed:<a href="http://www.uniprot.org/citations/24124604" target="\_blank">24124604</a>). Also acts to facilitate PKP3 exchange at desmosome plaques, thereby maintaining keratinocyte intercellular adhesion (PubMed:<a href="http://www.uniprot.org/citations/29678907" target="\_blank">29678907</a>). May also regulate MDM2 autoubiquitination and degradation and thereby activate p53/TP53 (PubMed:<a href="http://www.uniprot.org/citations/18382127" target="\_blank">18382127</a>).

#### Cellular Location

Cytoplasm. Nucleus {ECO:0000250|UniProtKB:O70456} Secreted. Note=May be secreted by a non- classical secretory pathway.

#### Tissue Location

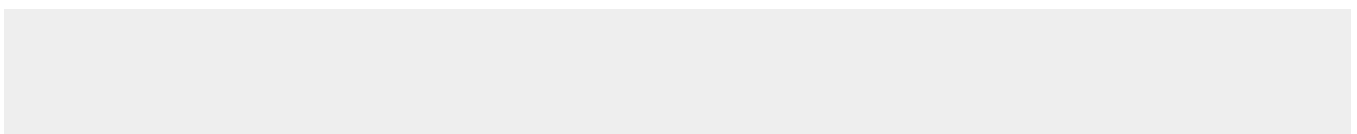
Present mainly in tissues enriched in stratified squamous keratinizing epithelium.

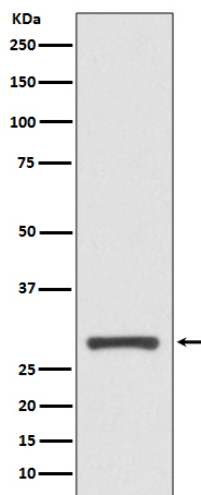
### 14-3-3 sigma Antibody - Protocols

Provided below are standard protocols that you may find useful for product applications.

- [Western Blot](#)
- [Blocking Peptides](#)
- [Dot Blot](#)
- [Immunohistochemistry](#)
- [Immunofluorescence](#)
- [Immunoprecipitation](#)
- [Flow Cytometry](#)
- [Cell Culture](#)

### 14-3-3 sigma Antibody - Images





Western blot analysis of 14-3-3 sigma expression in A431 cell lysate.